

Living

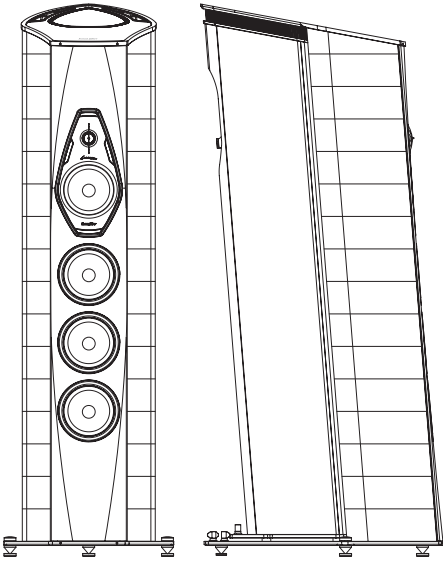
THE DUALITY OF SOUND

Sonus faber



THE DUALITY OF SOUND

Innovation and technology



Power and grace.
Dynamic and melody.
Fullness and void.
Kindness and impetuosity.
Harmony and chaos.

Seemingly opposite strong contrasts that co-exist in the music. Lilium has been designed to shape those great contrasts expressed by music.

It is the will of synthesis of two opposite elements: two separate identities that, although working independently one from each other, cooperate inside the same shape.

We have decided to adopt the organic style of the natural shapes, which is the family the Lilium belongs to.

Undoubtedly, this result marks a further step forward in the stylistic and acoustic research by Sonus faber.

Data sheet

SYSTEM: 3.5 way, orthogonal non interactive dual enclosure, para-aperiodic vented box "Stealth Reflex System" on the main enclosure, passive radiator tuned and "Zero Vibration Transmission" technology on the subwoofer enclosure, modulation-free 90° and decoupled from the main one, staggered low frequency floorstanding loudspeaker system.

CABINET: "Lyra shape" design, progressive thickness triple curvature cabinet walls damped spread resonance spectrum system, sub-structural ribs are strategically placed for total rejection of spurious vibrations and standing waves control. Two double "dampshelves" (from "The" experience), i.e. CNC anodized machined avionic "vibration dampers" (on the top and on the bottom of each cabinet) "stiffen" the column structures reducing consistently structural micro-vibrations coming from the cabinets' walls and the transducers. The "Anima legata" system is used in an innovative way, encompassing the structural ribs of the subwoofer enclosure. A special steel rod, a high speed mechanical interface, concentrates the remaining micro-vibrations conveying them to the dual multiple "Tuned Mass Dampers", i.e. two differently tuned special custom devices optimized to erase micro-vibrations, by oscillating in anti-phase. The subwoofer enclosure has been decoupled from the

main enclosure through a new implementation of the Zero Vibration Transmission technology, a suspension system, eliminating any acoustic feedback and any vibration propagation to the listening room. The radiation of the main enclosure and of the subwoofer one are orthogonal to avoid any intermodulation.

TWEETER: Sonus faber "Arrow Point" DAD (Damped Apex Dome, synthesis of the classic dome and ring transducer) H28 XTR-04. A Sonus faber designed 28 mm moving coil driver, with Sonus faber's vibration optimized mechanical interface. The ultra dynamic linearity is given by the new Neodymium motor system implemented with a natural wood acoustic labyrinth rear chamber, a mechanical anti-resonator designed for this application.

MIDRANGE: Sonus faber M18 XTR-04. A Sonus faber designed 180 mm neodymium magnet system ultra dynamic linearity midrange. CCAW wire is used on a composite former "eddy current free" voice coil. The dynamically linear magnetic field motor incorporates triple Kellogg/Goeller rings. A special custom diaphragm is made with a real time air dried non pressed blend of traditional cellulose pulp, kapok, kenaf and other natural fibers, developed according to the most natural sound. To further inhibit any residual cone coloration we are using a transparent viscous surface damping coating.



The same way as the tweeter, the midrange is decoupled from the main baffle board and designed synergistically with its optimized "acoustic chamber". A special coaxial anti-compressor is used, designed to remove cavity resonances and distortions.

WOOFERS: Sonus faber W18XTR-16. A triple of Sonus faber designed 180 mm lightweight "sandwich" cone structure (high-tech syntactic foam core and two external surface skins of cellulose pulp) woofers are integrated in an acoustically amorphous "stealth reflex" chamber. Designed to blend perfectly with the special midrange and, at the same time, to have absolute definition in their range: the sandwich structure with outer paper pulp skins has the same sonic character of the midrange cone. A powerful long stroke motor system with a 1,5" controlled "eddy current" voice coil is implemented for high speed, performance and linearity.

INFRA WOOFER: Sonus faber SW26 XT-08. Sonus faber designed a 260 mm infra woofer, lightweight hard paper composite sandwich cone technology for a maximum rigidity and implemented it in an acoustically amorphous passive radiator tuned separated enclosure. The unit features a very powerful long throw motor with a 2.5" voice coil for ultra dynamic linearity. To perfectly match the low-end performance to different listening rooms it is possible to adapt the SPL of the infra woofer.

CROSS-OVER: Non-resonant design, optimized amplitude/phase response for optimal space/time performance. "Paracross topology". The impedance at low frequencies is controlled for a clear and friendly amplifier performance. Double staggered transfer function low frequency/room interface optimized filter. Highest quality is used in terms of the components: Mundorf "Supreme" Silver/Gold/Oil capacitors, Jantzen inductors. Cross-over: 80Hz - 250 Hz - 2500Hz.

FREQUENCY RESPONSE: 20 Hz – 35.000 Hz, Stealth reflex included.

SENSITIVITY: 92 db SPL (2.83V/1 m).

NOMINAL IMPEDANCE: 4 ohm.

SUGGESTED AMPLIFIER POWER OUTPUT:
(without clipping) 100W – 800W.

LONG-TERM MAX INPUT VOLTAGE (IEC 268-5): 30 V rms.

DIMENSIONS: 1600mm x 491mm x 705mm (HxWxD).

WEIGHT:
103 Kg each – net weight.
156 kg each - shipping weight.

Available finishes

Special finishes on demand



RED



WALNUT



GOLD

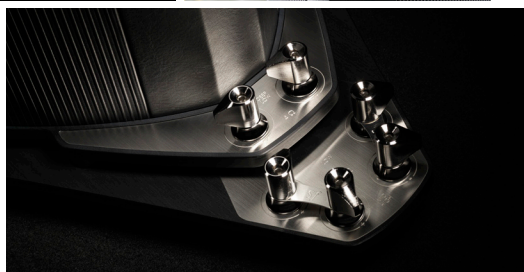
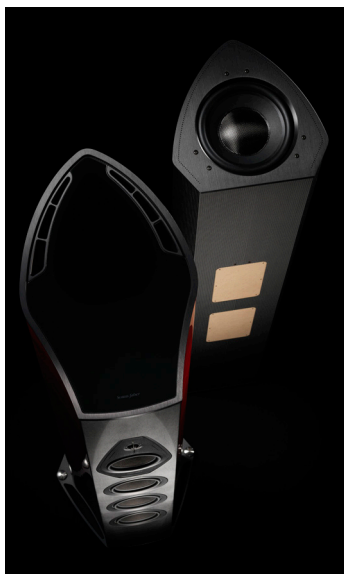
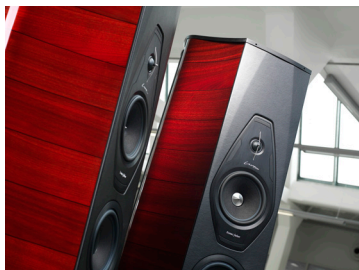


METAL BLACK



WHITE WALNUT

Sonus faber



Sonus faber

sonusfaber.com